

RANGE BANK NEGAUNEE, MICHIGAN



Scope: This project included the demolition of the existing building and site components. The new 4,278 sq.ft., branch bank facility has concrete footings, foundation, and slab on grade floor system; a wood frame with brick veneer, and an asphalt shingle roof on pre-engineered wood trusses. The facility houses four offices, a conference room, a vault with safe deposit, three teller stations, night depository, drive up teller window and associated support areas for the staff and facility.

Site work included a concrete two station drive up, new sidewalks, a planting area, new asphalt paved street access, parking, paving markings, and signage.

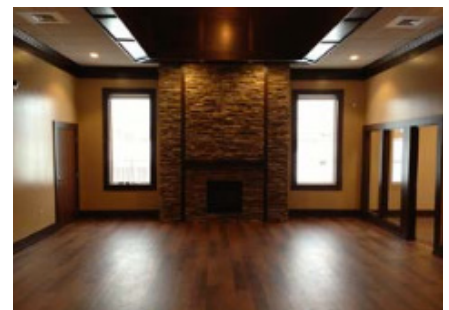
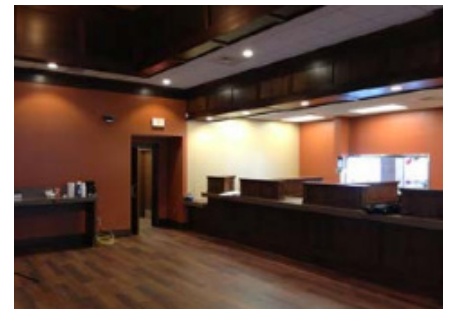
Owner: Range Bank

Project Location: Marquette, MI

Architect: OHM Advisors

Project Duration: 6 months

Project Completed: February 2013



180 TRADERS MINE ROAD | IRON MOUNTAIN MI 49801
800.743.0603 | 906.779.2303
WWW.GCFIRST.COM

GUNDLACH CHAMPION
A Division of Champion, Inc. SINCE 1898